

JTR CERAMIC ELECTRIC RADIATORS



ENERGY EFFICIENT ELECTRIC HEATING

INFO@ECOVOLT.IE | +353 (0)1 5240387 | ECOVOLT.IE

JTR CERAMIC ELECTRIC RADIATORS

This range of radiators are made using the latest in thermal technologies, combined with electronic thermostats for accurate heating control.

The unique design ensures quick heat transfer in the allocated room, while the built-in thermostat, CSD16/2 controller & app allows full control of your heating.

SPECIFICATIONS

- Kaolin/Ceramic heating elements
- Conductive die-cast aluminum panels
- Embedded stainless steel element
- Built in thermostat and RF receiver
- Smart built-in room sensor
- Wall mounting bracket
- Can be controlled by JS 10/2 controller

BENEFITS OF JTR RADIATORS

- Doesn't require pipes, tanks, gas or oil to operate
- Full 10 year body warranty
- 2 year electronics warranty
- Low capital installation costs
- Energy efficient and cost saving
- Warm comfortable radiant heat
- Fully controllable by integrated LCD thermostat or CSD16/2 controller & app
- Can be used as full heating system, as a stand alone system or supplement existing wet systems in hard to heat rooms
- Can avail of economy heating tariffs and night rate electricity tariffs
- Quickly transfers heat to the room
- The perfect option to replace outdated inefficient storage heaters



JT6 R

600W Electric Radiator
Heats rooms up to 8m²



JT9 R

900 W Electric Radiator
Heats rooms up to 12m²



JT12 R

1200 W Electric Radiator
Heats rooms up to 15m²



JT15 R

1500 W Electric Radiator
Heats rooms up to 18m²



JT20 R

2000 W Electric Radiator
Heats rooms up to 24m²



TECHNICAL AND CUSTOMER
SERVICE SUPPORT AVAILABLE



**Energy Efficient Product
of the Year**

JTR TECHNICAL SPECIFICATIONS

Model No.	Rating (W)	Size (cm)	Weight (kg)	Heating Area Up to (m2)**	Colour
JT6R	600	50 x 58 x 8	8.2	6/8	RAL 9016
JT9R	900	58 x 58 x 8	9.1	9/12	RAL 9016
JT12R	1200	82 x 58 x 8	13.2	12/15	RAL 9016
JT15R	1500	98 x 58 x 8	16.8	15/18	RAL 9016
JT20R	2000	114 x 58 x 8	20.2	18/24	RAL 9016

**Heating area based on buildings built after 2006. For rooms built pre 2006 use next radiator size up.



JT6B



JT4B

JTB ELECTRIC RADIATORS

- IP64 Electric vertical/horizontal radiator
- On demand heating
- Suitable for bathrooms conservatories and walls with limited space
- 2 Year Warranty
- The distance from the wall to front face is 71mm
- Can be connected to any plug socket or dedicated circuit
- Can be controlled by HT - 01 thermostat or CSD16/2 control panel

JTB TECHNICAL SPECIFICATIONS

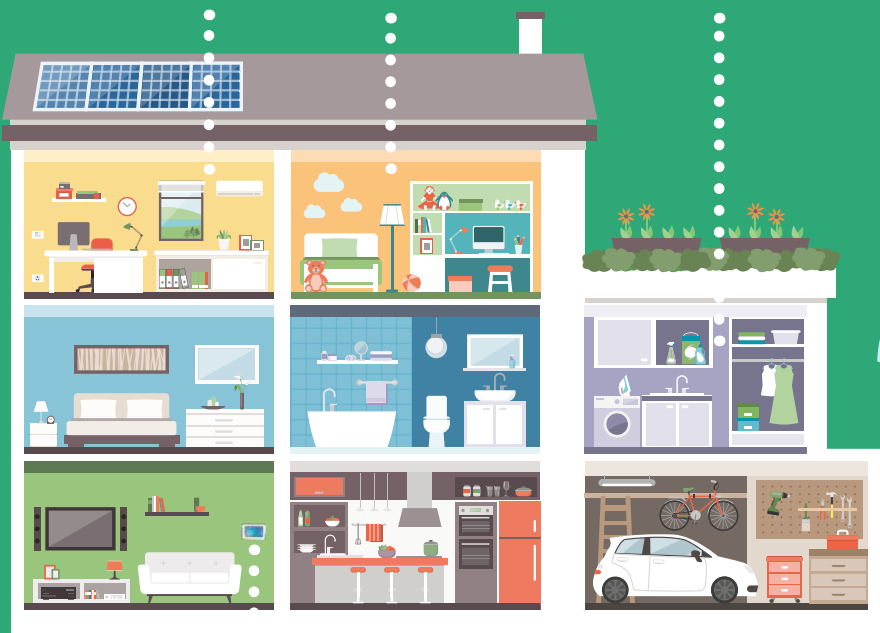
Model No.	Rating (W)	Size (cm)	Weight (kg)	Heating Area Up to (m2)	Colour
JT4B	400	90 x 37	12.7	5	RAL 9016
JT6B	600	90 x 52	17.3	7	RAL 9016

SET DIFFERENT TEMPERATURES FOR EACH ZONE EASILY

21C

18C

SIGNALS THROUGH WALLS & FLOORS



CSD16/2 HEATING CONTROL PANEL

This smart WiFi enabled touchscreen panel can control any domestic hot water cylinder or heating appliance wirelessly or remotely via our app. Zone and regulate the heat easily and instantly.

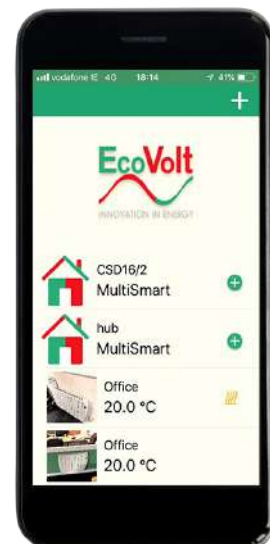


CONTROL UP TO 35 METERS AWAY



FEATURES OF THE CSD16/2 CONTROL PANEL

- User friendly controls
- WiFi enabled and controllable through our app
- Allows for multiple heating zones
- Easy temperature & time control per zone
- Up to 35 radiators and 5 hot water devices can be controlled from one panel
- Powerful signal strength that can go through walls, floors and ceilings
- Can fit into a standard single electrical flush socket box



+353 (0)1 5240387



Unit 3B Rosemount Park Drive,
Rosemount Business Park,
Dublin 11, Ireland



Info@ecovolt.ie
www.ecovolt.ie